

MONEY DOG ADVENTURES

November 2024

All Along the River



ALTON VISITOR CENTER

200 Piasa Street, Alton



At the Alton Visitor Center, you can measure yourself against Robert Wadlow, shop for stuffed eagles, and learn a ton of things about Alton!

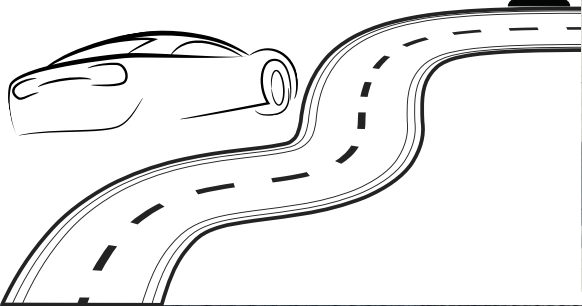


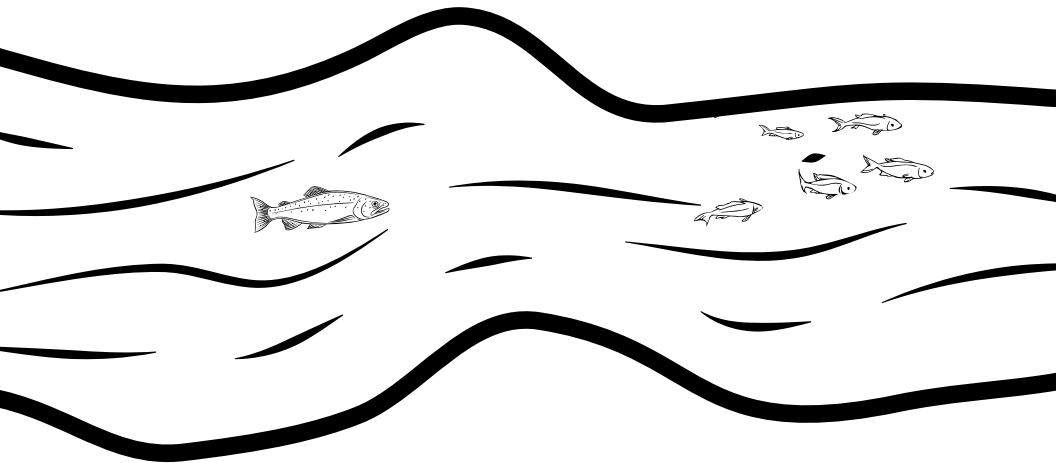
WEST END SERVICE STATION

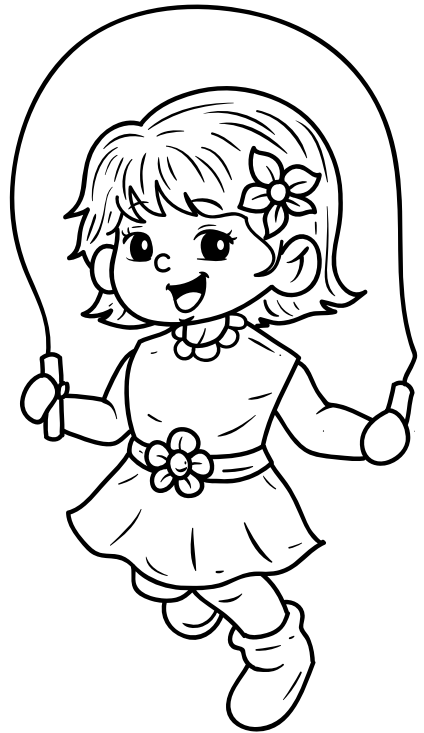
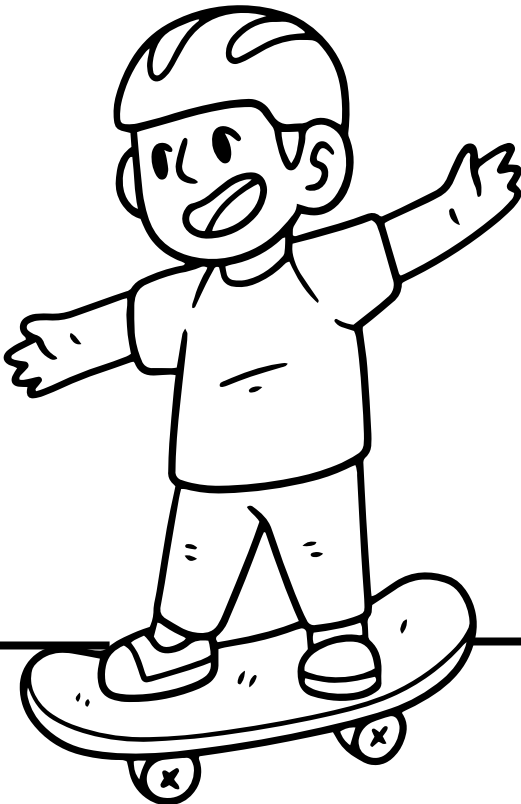
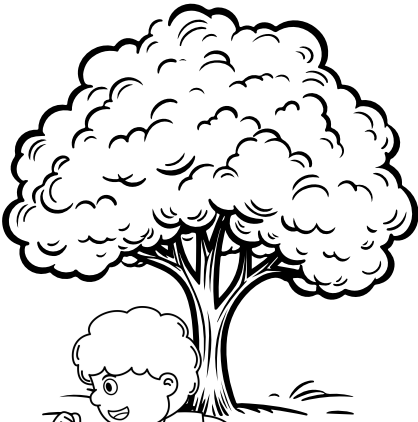
620 St. Louis Street, Edwardsville

Though not quite ON the river, it is near enough to be of note. This service station offered fuel and conveniences to people traveling on the historic Route 66 from 1927-1964, and has recently been restored to a lovely model of a service station in the last century.







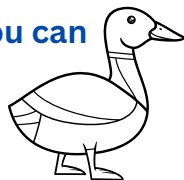




RIVERLANDS MIGRATORY BIRD SANCTUARY

301 Riverlands Way, West Alton, MO

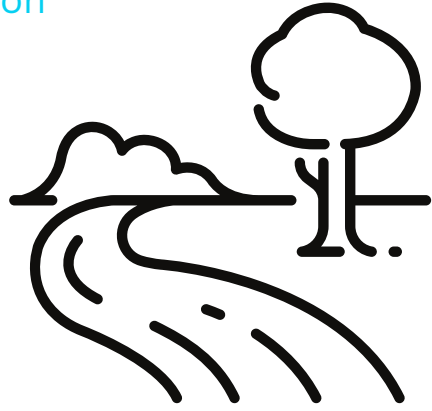
Just across the Clark Bridge and to the left is a large nature preserve that includes a bird sanctuary. Many birds stop here throughout the year. Some species include the bald eagle, Trumpeter Swan, Eurasian Tree Sparrow, and many more! Stop by the Audubon Center and learn about all these birds and drive or walk around to see if you can spot them!



PERE MARQUETTE STATE PARK

13112 Visitor Center Lane, Grafton

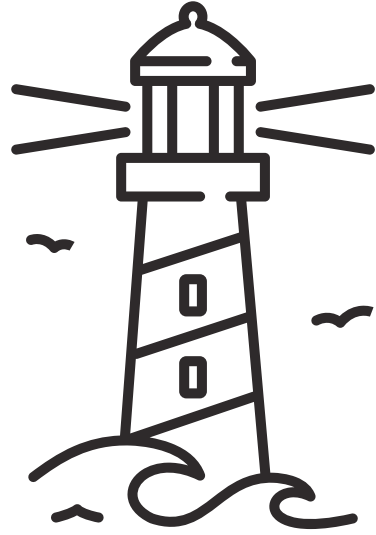
Marquette State Park is a great place for families who like to be outdoors. You can hike, take in the amazing views of the bluffs, farmland, and rivers, go for a walk, or stop in at the lodge for a bite to eat and a life-size chess board. In the winter, you might be able to spot an eagle.



GRAFTON RIVERFRONT

There are so many things to do and see in Grafton! There's a sky lift, Raging Rivers Water Park, Alpine Coaster, zip line, flea markets in warm weather and ice skating in the winter at the Loading Dock, shops, and restaurants.

These photos show the most recent flood in Grafton. You can usually walk right up to the lighthouse, but here you can see it's all under water.

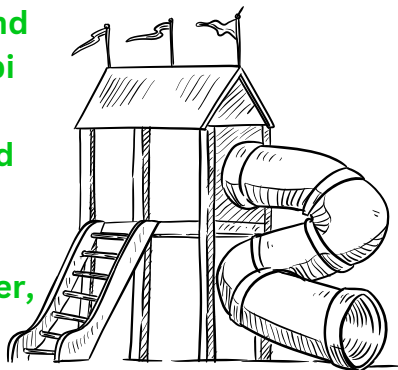




CLIFTON TERRACE PARK

3216 McAdams Parkway, Godfrey

Located at the bottom of Clifton Terrace, this park sits right on the River Road and offers beautiful views of the Mississippi River. A playground with lots of fun equipment is the focus of this park, and comes with the added benefit of restrooms and some places to sit and have a snack. If you're here in the winter, look for eagles!





**MIDWEST
MEMBERS**
Credit Union